

Adjustable Hand Levers

Zinc Die Casting, Insert Stainless Steel,
with Internal Thread / with External Thread,
with Increased Clamping Force

SPECIFICATION

Handle

Zinc die casting

- Powder coated
 - Black, RAL 9005, textured finish **SW**
 - Black, RAL 9005, silk finish **SZ**
 - Orange, RAL 2004, textured finish **OS**
 - Red, RAL 3000, textured finish **RS**
 - Silver, RAL 9006, textured finish **SR**
- Chrome plated **CR**

Axial bearing

Stainless steel AISI 630

Insert

Stainless steel AISI 420 (Internal thread)
Stainless steel AISI 303 (External thread)

Retaining screw

Stainless steel AISI 304Cu

Pressure spring

Stainless steel AISI 301



INFORMATION

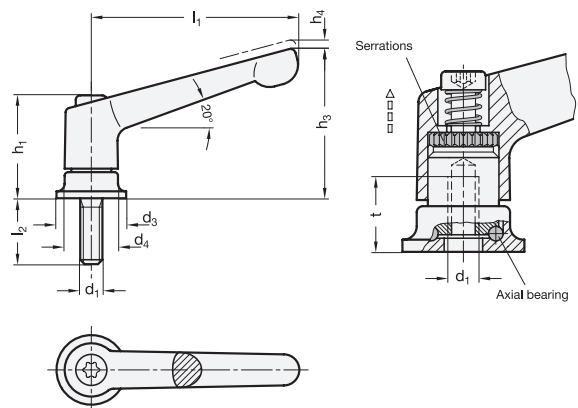
Adjustable hand levers GN 300.7 are produced with a clamping area which is linked via a thrust ball bearing (axial bearing) to the insert of the hand lever.

This has led to the following advantages:

- Doubled clamping force through vastly reduced friction.
- There is no movement on the contact area between adjustable hand lever and component which greatly reduces any marking on the clamping area.
- In addition a reduced creep factor has been achieved by the increased preload.

TECHNICAL INFORMATION

- Stainless Steel Characteristics (see page A26)



* Complete with



GN 300.7-With internal thread

STAINLESS STEEL

Description	l ₁	d ₁	d ₃	d ₄	h ₁	h ₃	h ₄ Stroke	t min.	⚖
GN 300.7-63-M6-*	63	M 6	24	17.5	34.5	48.5	4	12.5	99
GN 300.7-78-M8-*	78	M 8	25	21	39.5	58.5	4	14	151
GN 300.7-92-M10-*	92	M 10	30	24	46.5	68.5	4	18	219
GN 300.7-108-M12-*	108	M 12	35	30	56.5	82	5	26.5	368

Weight SW

GN 300.7-With external thread

STAINLESS STEEL

Description	l ₁	d ₁	l ₂ ≈	d ₃	d ₄	h ₁	h ₃	h ₄ Stroke	⚖
GN 300.7-63-M6-20-*	63	M 6	20	24	17.5	34.5	48.5	4	107
GN 300.7-63-M6-27-*	63	M 6	27	24	17.5	34.5	48.5	4	108
GN 300.7-78-M8-21-*	78	M 8	21	25	21	39.5	58.5	4	165
GN 300.7-78-M8-36-*	78	M 8	36	25	21	39.5	58.5	4	171
GN 300.7-92-M10-29-*	92	M 10	29	30	24	46.5	68.5	4	249
GN 300.7-92-M10-47-*	92	M 10	47	30	24	46.5	68.5	4	260
GN 300.7-108-M12-34-*	108	M 12	34	35	30	56.5	82	5	422
GN 300.7-108-M12-50-*	108	M 12	50	35	30	56.5	82	5	436
GN 300.7-108-M12-65-*	108	M 12	65	35	30	56.5	82	5	449

Weight SW

